

COOS SOIL AND WATER CONSERVATION DISTRICT



2016
ANNUAL REPORT

Table of Contents

<u>List of Cooperators</u>	1
<u>Board of Directors Contact Information/Coos SWCD Committees</u>	2
<u>Technical and Financial Resources for Landowners</u>	3
<u>Coos SWCD Annual Financial Review Fiscal Year 2015-2016</u>	4-5
<u>Coos SWCD's Mission Statement, Goals, and History</u>	6
<u>Coos SWCD's Address and Office Information</u>	7
<u>Coos SWCD's Staff and Directors</u>	8
<u>Langlois Mountain Rain Gauge Project/Manure Outreach Project</u>	9
<u>Coos SWCD Projects - Manure Management</u>	10
<u>Coos SWCD Projects - Riparian Process & Function</u>	11
<u>Coos SWCD Projects - Irrigation Efficiency</u>	12
<u>Northwest Youth Corp</u>	13
<u>Guerin Memorial Essay Contest</u>	14
<u>Community Outreach 2016/Upcoming Community Outreach 2017</u>	15
<u>Knotweed</u>	16
<u>2016 Natural Resource Conservation Service Report</u>	17
<u>2016 Farm Service Agency Report</u>	18-19
<u>Coos SWCD Zone Map</u>	20

List of Cooperators

FEDERAL

USDA, Natural Resources Conservation Service (NRCS)
USDA, Farm Service Agency (FSA)
USDA, US Forest Service
USDOI, Bureau of Land Management
USDD, Army Corps of Engineers

COOS COUNTY

Board of Commissioners
Planning Commission
County Forester
Drainage District Chairman
County Water Master
Coos County Weed Advisory Board
County Road Department
Coquille Watershed Association
Coos Watershed Association
Tenmile Lakes Basin Partnership

PORTS

Port of Bandon
Port of Coquille

OREGON

Department of Agriculture (ODA)
Special Districts Association
Oregon State University Extension Service
Department of Forestry (ODF)
Department of Fish and Wildlife (ODFW)
Department of Environmental Quality (DEQ)
Soil and Water Conservation Commission

DISTRICT STAFF

Caley Sowers/ Watershed Technical Specialist/Office Manager
Modena Thomas/Office Assistant

ACCOUNTANT

Coquille Valley Accounting (CVA)
John Fandel
Seth Fandel

Coos Soil and Water Conservation District

Board of Directors and Employees 2015-2016

Zone 1

Adela Villers
61456 Lower Mattson Road
Coos Bay, OR 97420
(541) 290-9650

Zone 2

Dan Pierce
Secretary
85091 North Bank Ln.
Coquille, OR 97423
(541) 347-5110

Zone 3

Charlie Waterman,
Vice-Chairman
87518 Davis Creek Lane
Bandon, OR 97411
(541) 347-3453

Zone 4

Vacant

Zone 5

Chuck Steffensmeir
2250 Lynne Drive
North Bend, OR 97459
(213)-393-8942

Member at Large, Position #1

Ernie Newton
Treasurer
1631 Bothwick St.
Myrtle Point, OR 97458
(541) 572-2589

Member at Large, Position #2

Mark Villers
Chairman
61456 Lower Mattson Road
Coos Bay, OR 97420
(541) 290-9650 (cell)

Registered Agent

Charlie Waterman

Associate Directors

Sharon Waterman

Director Emeritus

Gordon Ross
Joe Cortez
Ken Messerle
Dan Varoujean

District Staff

Caley Sowers
*Watershed Technical
Specialist/Office Manager*
371 N. Adams St.
Coquille, OR, 97423
(541) 396-6879

District Staff

Modena Thomas
Office Assistant
(541) 396-6879

Coos SWCD Committees:

Projects Committee

Dan, Charlie,
Mark and Ernie

Plan of Work

Caley Sowers

Budget Committee

Dan Pierce and Mark Villers

Guerin Memorial Essay Contest

Sharon Waterman, Ann Guerin
Cheryl Griffith

Website Committee

Caley Sowers and Mark Villers

Personnel Committee

Mark Villers and Charlie Waterman

LAC Representative

Caley Sowers and Dan Pierce

Coquille Watershed Representative

Caley Sowers and Ernie Newton

Scope of Work

Caley Sowers and Beth Pietrzak

Small Grant Team Representative

Mark Villers & Ernie Newton

South Fork Advisory Rep.

Caley Sowers

Technical and Financial Resources for Landowners

Coos Soil and Water Conservation District

Caley Sowers — *Watershed Technical Specialist*
371 North Adams Street
Coquille, OR 97423
(541) 396-6879

USDA - Natural Resources Conservation Services

Eric Moeggenberg — *District Conservationist*
382 North Central Blvd.
Coquille, OR 97423
(541) 396-2841 ext. 105

Curry County Soil and Water Conservation District

94181 4th Street
Gold Beach, OR 97444
(541) 247-2755

Oregon Department of Agriculture - Natural Resources Division

635 Capital Street NE
Salem, OR 97301-2532
(503) 986-4700

Oregon State University Extension Service

Cassie Bouska — *Extension Agriculture*
631 Alder Street
Myrtle Point, OR 97458
(541) 572-5263

Coos Watershed Association

Jon Souder — *Director*
PO Box 5860
Charleston, OR 97420
(541) 888-5922

Coquille Watershed Association

Kelly Miles — *Director*
223 N Alder Street
Coquille, OR 97423
(541) 396-2541

Tenmile Lakes Basin Partnership

Mike Mader — *Director*
PO Box L
Lakeside, OR 97449
(541) 759-2414

Oregon Department of Forestry

63612 5th Road
Coos Bay, OR 97420
(541) 267-4136

Coos County Water Resources Department

Gregory Wacker — *District 19 Water master*
290 North Central Street
Coquille, OR 97423
(541) 396-1905

USDA - Farm Service Agency

Bret Harris — *County Executive Director*
376 N. Central Blvd.
Coquille, OR 9423
(541) 396-2841 ext. 100

Coos/Curry CREP Tech

Barbara Grant
(541) 396-4323 ext. 106

Bureau of Land Management

1300 Airport Lane North Bend, OR 97459
(541) 756-0100

Oregon Department of Environmental Quality

Pam Blake
381 North 2nd Street
Coos Bay, OR 97420
(541) 267-2721 ext. 27

Oregon Department of Environmental Quality

381 N 2nd Street
Coos Bay, OR 97420
(541) 269-2721

Oregon Department of Fish and Wildlife

63538 Boat Basin Road
PO Box 5003
Charleston, OR 97420
(541) 888-5515

Oregon Watershed Enhancement Board

Mark Grenbemer
221 West Stewart Avenue - Suite 201
Salem, OR 97501-3647
(541) 776-6010 ext. 231

Coos County Planning Department

Jill Rolfe, Planner
225 N. Adams Street
Coquille, OR 97423
(541) 396-3121 ext 210

Coos SWCD Annual Financial Review Fiscal Year 2015-2016

FY 2014-2015 COOS SOIL AND WATER CONSERVATION DISTRICT ANNUAL FINANCIAL REVIEW

ODA Scope of Work Funds Estimated Budget		1 st Quarter	2 nd Quarter	3 rd Quarter	4 th Quarter (extended)	Total Expenses to Date
FY 2014-2015		July 1 – Sept. 30 2014	Oct. 1 – Dec. 31 2014	Jan.1 – Mar. 31 2015	April 1- June 30 (extended to July 31) 2015	(Updated Quarterly)
Quarterly Payments:		\$12,500.00	\$12,500.00	\$12,500.00	\$12,500.00	\$50,000.00
Beginning Balance:	\$15,415.22 (carry-over from previous fiscal year)	\$27,915.22	\$30,885.20	\$28,654.34	\$34,753.55	
Direct Expenses:						
Personnel	\$49,200.00	\$7,548.11	\$10,868.44	\$5,292.47	\$17,054.76	\$40,763.78
Staff Training	\$1,200.00	\$0.00	\$560.80	\$400.00	\$50.00	\$1,010.80
Education/Outreach	\$1,550.00	\$772.05	\$1240.50	\$0.00	\$842.00	\$2,854.55
Contracted Services	\$0.00	\$0.00	\$0.00	\$0.00	\$8,688.69	\$8,688.69
Travel & Mileage	\$2,500.00	\$161.84	\$693.13	\$138.60	\$1,639.55	\$2,633.12
Supplies & Materials	\$2,800.22	\$90.35	\$119.42	\$36.32	\$34.22	\$280.31
Production Costs	\$3,620.00	\$163.50	\$21.00	\$0.00	\$2,790.63	\$2,975.13
Equipment	\$0.00	\$0.00	\$0.00	\$0.00	\$0.00	\$0.00
Administration*	\$4,545.00	\$794.17	\$1,227.57	\$533.40	\$3,653.70	\$6,208.84
Total Expenses	\$65,415.22	\$9,530.02	\$14,730.86	\$6,400.79	\$34,753.55	\$65,415.22
Remaining Balance	\$0.00	\$18,385.20	\$16,154.34	\$22,253.55	\$0.00	\$0.00

The above table demonstrates our Fiscal Year 2014-2015 Scope of Work Funds estimated budget and actual expenses for each quarter. Note that we started the year with a carry-over of \$15,412.22 from the previous fiscal year, and ended with a zero balance. The next table outlines the spending of our District Operations grant funds, which are primarily used for operating costs such as office rent, utilities, book-keeping, insurance, and satisfying certain legal requirements each year.

Coos SWCD Annual Financial Review Fiscal Year 2015-2016

Coos SWCD 2014-2015 Financial Report of Expenses: ODA District Operations Funds

	FY 2014-2015 Actual Expenses
Total District Operations funds received	\$20,930.00
Expense Category (Please list all; add more lines if needed):	
In-house personnel	\$640.00
Education and Outreach	\$600
Contracted services	\$11,320.00
Travel & Mileage	\$522.61
Supplies and materials	\$974.13
Operating Costs	\$4087.78
Equipment	44.88
Risk and Accountability	\$2740.60
Total All Expenses	\$20,930.00
Remaining Balance (should be \$0.00)	\$0.00

Budget Category Definitions:

- In-house personnel: includes salaries/wages, benefits, accrued leave liability, taxes and workers compensation insurance.
- Contracted services: includes any payments made to a contractor(s) or subcontractor(s) for services related to the Scope of Work or the District Operations Fund.
- Travel: includes mileage, meals, per diem, and lodging for projects and tasks.
- Staff training: includes registration, mileage, meals, per diem, and lodging related to staff receiving training.
- Supplies/materials: includes items that are used to complete the Scope of Work tasks and District Operations. Do not include supplies and materials used for education and outreach.
- Education and Outreach: includes facility rental, copying, printing, signs, publishing, supplies/materials, web design, tours, workshops, postage, etc.
- Equipment: items \$250 and over which includes computers, printers, software, monitoring equipment, GPS units, cameras, etc. required to complete the Scope of Work tasks and District Annual Work Plan. All equipment purchased must reside with the District.
- Fiscal administration (only allowed for the Scope of Work fund and not to exceed 10% of the Scope of Work expense): includes costs directly associated with implementing the SOW, tracking and reporting, SOW fiscal administration, SOW task management and development. Not intended to cover the SWCD's overall operating expenses.
- Operating costs (only allowed for the District Operations fund): includes office rent, office equipment rent/purchase (purchased equipment must reside with district), postage, printing, utilities, etc.
- Risk and accountability (only allowed for the District Operations fund): includes statutory requirements, audits/annual reviews, annual reports, annual board meetings, board meetings and minutes, risk management and insurance, etc.

COOS SOIL AND WATER Conservation District

MISSION STATEMENT

SWCDs help landowners and managers plan and apply conservation practices that conserve water, maintain soil health and productivity, enhance wildlife habitat, and improve watershed function. SWCDs serve as a central hub by helping landowners and land managers access available technical, financial, and educational resources from local, state, federal, and other sources in their efforts to implement good conservation management, comply with environmental regulations and endangered species act requirements, and be good land stewards.

THE FUNCTION OF THE CONSERVATION DISTRICT

To take available technical, financial, and education resources, whatever their source, and focus or coordinate them so that they meet the needs of the local land user for conservation of soil, water, and related resources.

- Applied from Pete Nowak's "The Conservation District Official: Villain or Victim?"

COOS SWCD GOALS

- ◆ To promote wise use of renewable resources through locally led voluntary conservation.
- ◆ Conserve, protect and develop natural resources for the economic benefit of the people of Coos County.
- ◆ Encourage measures for the protection of waters of Coos County.
- ◆ Assist local landowners in the developing and utilizing their resources to reduce soil erosion, conserve and improve water quality, maximize crop and forage production, improve fish & wildlife habitat, and to support the economy of Coos County.

HISTORY OF COOS SWCD

The Coos Soil and Water Conservation District was formed in 1962, and coordinates government assistance with conservation needs, provides assistance, information, and education for Coos County farmers, ranchers, and woodlot owners to implement sound resource management and conservation practice.

The Coos-Coquille Agriculture Water Quality Management Plan (AgWQMP) was developed in 1998 for the 1993 directives of Senate Bill 1010. The document consists of an education component and a set of rules addressing measures that safeguard water quality, the beneficial uses of water resources, and provide best management practices for water quality concerns. The plan also includes the basins of Ten Mile Lakes, Four Mile Creek and Two Mile Creek as well as the Camas Valley and Lower Umpqua areas in Douglas County. Two Public hearings were held in Coos County in the fall of 2001; and after a period of public comment and review the Coos-Coquille Ag WQMP was adopted by the Board of Agriculture in March of 2002. The Coos SWCD provides support to the Local Advisory Committee (LAC), which meets every two years for a review of the WQMP and associated rules.

COOS SWCD DISTRICT OFFICE



The Coos Soil & Water Conservation District building is located at 379 North Adams Street Coquille, Oregon. The office hours are from 8am to 4:30pm, Monday through Friday and anyone is welcome to come by. Pamphlets, brochures, and packets are available right when you enter the office. So feel free to come in and get any information you need related to agriculture, farming practices, water quality, herbicides and so on. Please stop by any time.

Weed wrenches: for extracting noxious weeds on your property (ex. gorse and scotch broom) are also available for rent for up to 2 weeks for a \$25 refundable deposit at the Coos SWCD (396-6879) and NRCS (396-2841) offices in Coquille.



COOS SWCD STAFF

Caley Sowers

Watershed Technical Specialist/Office Manager



Modena Thomas

Office Assistant



We look forward to hearing from all professionals in the natural resource field, as well as any concerned citizens or landowners. As employees of a non-regulatory agency, we are willing to go out to landowner's farms or ranches to assist in any way possible. Our positions here are to cooperate with local agencies, to provide technical and financial assistance to landowners to help them farm and ranch to the fullest extent possible while staying compliant with water quality.

2016 COOS SWCD DIRECTORS & STAFF



(Left to right): **Modena Thomas** - Office Assistant; **Caley Sowers** - Watershed Technical Specialist/Office Manager; **Chuck Steffensmeier** - Zone 5; **Charlie Waterman** - Vice Chairman, Zone 3, County Planning Commission, Coos Forest Protective Assoc.; **Ernie Newton** - Treasurer, Member at Large #1, President of the Coquille Watershed Assoc. and Water Plant Operator for the City of Myrtle Point; **Dan Pierce** - Secretary, Zone 2, Local Rancher; **Mark Villers** - Chairman, Member at Large #2 and owner of Blue Ridge Timber Co.; **Adela Villers** - Zone 1

LANGLOIS MOUNTAIN RAIN GAUGE SITES:

Launched August 30, 2011

In the early summer of 2011 former board member Tom Forgatsch (Coos SWCD Zone 2 Director) thought of an idea for a project. He felt that it was necessary to collect data to better determine how much water is actually available to landowners and cranberry growers near the ocean. Tom Forgatsch called around and was able to get approval from the Bureau of Land Management (BLM) to borrow two rain gauges worth \$1,285. The agreement was for the Coos SWCD to set up the two devices, collect the data, and share the data with BLM. Coos SWCD staff will go to the two sites located up Langlois Mountain Road at ~2.5 mile marker (Site 1) and 12 miles up the road (Site 2) once every month to record the data and check the condition of the devices and the batteries.



Site 1: Hilderbrand's Property
(N 42 55.724' W 124 24.604')
Elevation: 1,006 ft, HOBO #194840



Site 2: Steve Kalina's Property
(N 42 57.174' W 124 18.135')
Elevation: 1,323 ft, HOBO #270940

Got Manure? Need Manure?



Coos SWCD is in the process of compiling a list of local people who have manure, either for sale or for free, and for people in need of manure for fertilizer. If you would like to be part of this list, please contact our office today to let us know. We will put you in contact with other local people who can help fulfill your manure needs. Please call us at 541-396-6879 or email us at info@coosswcd.org to find out more information.

We can also help you if you have any questions about being in compliance with the Agricultural Water Quality Management Plan & Rules. Often people believe they are doing the right thing, until someone files a complaint and the landowner get a visit from the Oregon Department of Agriculture, and is told they must relocate their manure pile or alter their management. The Coos SWCD is a non-regulatory organization that exists to help landowners avoid such situations. If you have any questions or concerns about something on your agricultural property, please do not hesitate to call us. We can provide information, make recommendations, answer questions, and if necessary we have resources to help you address water quality issues.

COOS SWCD PROJECTS - MANURE MANAGEMENT

This project was a joint effort between Coos SWCD and a local boarding stables operator to improve manure management methods on the property. The landowner did not own any heavy equipment, and relied mainly on the boarders to clean out their horse's stalls and empty the bedding into a pile outside the barn where it could compost naturally. After some concerns arose that some of the old piled manure might be in a place where heavy rainfall could cause it to leach into a small perineal stream that was located at the bottom of a ravine behind the barn, the Coos SWCD worked with the landowner to devise an improved management strategy. We came up with a plan and design based off the average number of horses boarding at the facility at any given time, and applied for an OWEB small grant to construct this basic lean-to manure storage and composting facility. It is set up so the landowner can utilize an O2 aerated composting system which she already owned, and now it produces this horse boarding stable with a covered area and non-permeable surface on which to store manure until it can be used as fertilizer in the landowner's greenhouse.



COOS SWCD PROJECTS - RIPARIAN PROCESS & FUNCTION

This project is for a progressive farm plan in Coos County. The landowner is currently transitioning from stocking primarily cattle (formerly a herd of 60-100) to sheep. This transition will have less impact to the landscape and is better suited to the hillside pasture area. Water hoses were used from the barn to watering troughs so livestock no longer need to water directly from the stream and are completely excluded from the stream channel in these areas. Another issue facing this land was lack of riparian vegetation to provide stream shade and bank stability along the channel. Once riparian exclusion is achieved, the landowner, with technical assistance from Coos SWCD and ODFW, will plant the fenced area winter 2016 with willow cuttings taken from on-site and sources close to the site. Cottonwood, spruce and cedar will also be planted at the higher elevation. This site has also been chosen for a 3-day course titled "Grazing Management in Riparian, Wetland, and Other Sensitive Habitat Areas."



COOS SWCD PROJECTS - IRRIGATION EFFICIENCY

This project, located on the South Fork of the Coquille River just downstream from Powers, funded the installation of a K-line pod irrigation system that increases efficiency and reduces water use. Efficient irrigation systems and water management in the Coquille Watershed have a significant positive effect on water quality. On this property, installation of the K-line system should increase the efficiency of the landowner's irrigation system from 51% to 70%, according to NRCS worksheet Water Savings Estimator for Irrigation System Planning and Ranking. This should result in an estimated annual water savings 6.8 acre-inches per acre.

K-line systems are custom designed to each particular field, applying precisely the correct amount of water necessary, eliminating wasteful overwatering and deep percolation. They do this by applying the water slowly and gently over a longer period of time, allowing the soil to absorb the maximum amount of moisture without surface runoff.

In context of the watershed as a whole, the general idea is that the need to use less water for irrigation should result in more water left in-stream. While the difference from one landowner's improvements in efficiency may not provide a measurable impact on the watershed; the cumulative effects of all of the improvements being made, as more and more landowners upgrade to the more efficient irrigation systems, will provide a noticeable impact on flow levels over time.



COOS SWCD PROJECTS - WOOD CREEK



Wood Creek Pre-Project: degraded riparian, lots of blackberry, Summer, 2015



Project Implementation: construction of 'elk-braces' for wildlife stream crossings, Fall, 2016



Project Implementation: logs piled and ready for instream placement, Fall 2015

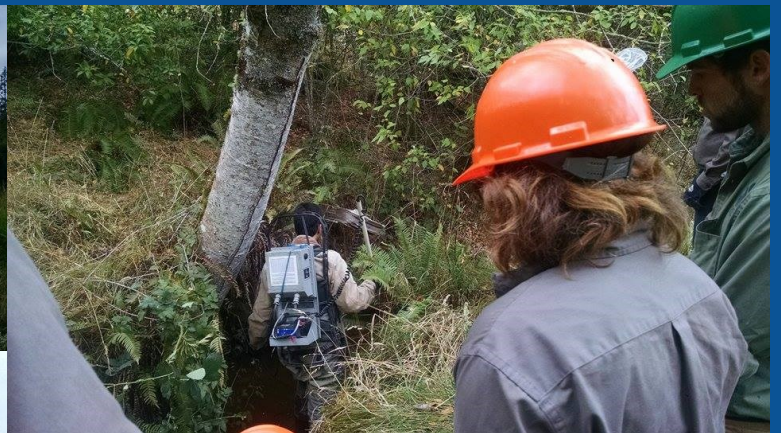
COOS SWCD PARTNERSHIPS



Coos SWCD staff volunteering with Oregon Department of Fish and Wildlife to assist with sampling for juvenile Coho in Winter Lake and Beaver Slough in Spring 2016.



Coos SWCD staff assisting Coos Watershed Association with fish salvage at the Millicoma Oxbow Reconnection Project, Summer 2016.



Coos SWCD staff partnering up with & educating Northwest Youth Corp in Fall 2016.



2016 Partnership Report

Where NYC Works



2621 Augusta Street Eugene, OR 97403
541.349.5055



northwestyouthcorps.org facebook.com/nwyouthcorps
youtube.com/user/nwyouthcorps twitter.com/nw_youthcorps

Coos SWCD-Habitat Restoration



2621 Augusta Street Eugene, OR 97403 | 541.349.5055 | northwestyouthcorps.org

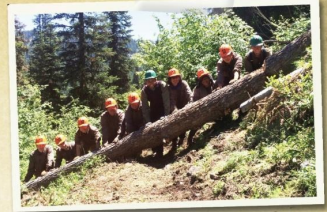
Partnership Totals



Northwest Youth Corps



- 325 hours of project work completed during the partnership.
- 9 youth participants during project weeks.
- 45 educational hours taught to corpsmembers by staff and sponsors.
- 1 acre of noxious/invasive species eradicated.
- 1,200 feet of fence construction



"At NYC I learned how to be myself. I also Learned that having a positive mental attitude can make the hardest things so much fun. The most important thing I learned is to never go stagnant. You always want to keep learning and growing as a person."

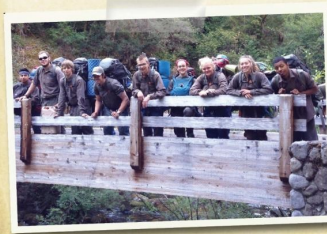
-C.L. 2016 Crew Member

"For three years I have attended NYC, each time getting a different experience. It is only after a session when I return back home that I realise how much of an impact NYC has made on me. The friends I made and the personalities I have encountered have made me person I am today."

-S.P. 2016 Crew Member

"While working at NYC, I have learned that teamwork is the only way that projects are going to get done...NYC is the best thing I could have, and will have done, to further better myself in life."

-J.L. 2016 Crew Member



The Guerin Memorial Essay Contest

By: Anne Guerin

The Coos Soil and Water Conservation District directors have honored the memory of Dorothy Guerin for 34 years by sponsoring the Guerin Memorial Essay Contest, and 11 years ago including her husband Tom, who was a director for many years. Before her early death in 1980, Dorothy worked in the CSWCD office, a position she very much enjoyed. Tom initiated the memorial in 1982, which has been sustained over the years by generous donors both on and off the board of directors.

The essay contest promotes an opportunity to engage young people in Coos County in research and reflection on natural resource issues that are important to the county and the state as a whole. The topics emphasize conservation practices that protect land and water values. The winner receives a plaque to be displayed in his/her school for the remainder of the year, plus \$150. Second place winner receives \$125, while third place winner receives \$100.

A bit of personal history: Tom and Dorothy were good examples of the impact of education and exposure to better practices by their involvement with the CSWCD. With no garbage service on their ranch south of Myrtle Point, tin cans, once emptied of their contents, were tossed down the hill by the garage, some of them eventually tumbling into the creek that ran by our old ranch house. That practice stopped. In an attempt to reduce erosion on the banks of the Middle Fork of the Coquille that ran beside the Bull Pasture, Dad had old car hulks planted. That, too, was no longer done.

Tom saw that new and better practices needed to be implemented. Perhaps some of these young essay entrants will eventually become farmers, ranchers, or loggers, and will also strive to adapt their ways to what is going to better protect the land and water where they live and work.



The contest is open annually to all Coos County students (including home-school students) from grades 7 through 12.

Essay Guidelines: Select one essay topic out of the three provided. The essay must be a minimum of 500 words, and should show that the writer has researched the topic and understands the issues.

- 1. Explain how conservation practices used by landowners (farmers, ranchers, timber holders) can benefit water quality in Coos County/Oregon.**
- 2. What conservation practices used by landowners and/or the public in Coos County are utilized to protect soil and decrease erosion?**
- 3. How have farming, ranching, or timber land management practices changed over the last 100 years to protect the environment and water quality in Oregon or Coos County?**

2016 contest winners will be announced this year at the annual meeting on November 10, 2016 at 6pm at the OSU ext office in Myrtle Point. Please contact our office at 541-396-6879 for 2016 deadline.

First Place -\$150, Second Place - \$125, Third Place -\$100

COMMUNITY OUTREACH 2016



Coos County Fair 2016 - A special thanks to the Coquille Indian Tribe for donating the use of the tent for the 2016 Coos County Fair. Participating in the Natural Resource tent this year were The Coquille Indian Tribe, Coos Soil and Water Conservation District, Oregon Forestry Association/ OSU, Oregon Department of Fish and Wildlife, Natural Resource Conservation Services, Bureau of Land Management, Society of American Foresters, Wild Rivers Land Trust, and Southwestern Oregon Community College.

UPCOMING COMMUNITY OUTREACH 2017

Don't miss our upcoming 3 day course, "***Grazing Management in Riparian and Sensitive Habitat Areas***" coming up in May, 2017

Course Objectives: To build an understanding of the tools, concepts, and thought processes relative to livestock grazing in riparian areas so that participants will be able to work with other individuals, groups, and agencies to develop and implement successful grazing management strategies. Participants learn to develop riparian resource objectives and design grazing management strategies that are practical and foster sustainable conditions.

Collaborative planning, focused monitoring, and adaptive management are emphasized, along with success through operator commitment. Given an actual livestock operation situation, participants will be able to provide grazing management alternatives to achieve riparian objectives.

Target Audience: Livestock producers, agency personnel, and others who are involved with planning, managing, or evaluating riparian grazing systems.

For three-days, experts from the National Riparian Service Team and Oregon Riparian Team will lead this **free** training, both in classroom sessions paired with daily field workshops.

Have an idea for a workshop or a class you would like to see in our area? Please contact our office at 541-396-6879 or email us at info@coosswcd.org to tell us your idea and we will see what is available.

WANTED

INVASIVE Japanese and Himalayan KNOTWEED



Photo by Britt Slattery, USFWS

Knotweed is an ornamental plant native to Asia. Japanese knotweed is characterized by a wide, heart-shaped leaf, and Himalayan knotweed has an elongated leaf. Both types have bamboo-like, green or reddish stems, and bright green leaves 1-12" wide with smooth edges. Knotweed begins its growth in April, and by July it can reach a height of 12 feet! Large spikes of small, white flowers bloom in late summer. In the winter months, although the plant lies dormant and dead, brown stems may remain standing. - When it colonizes in areas such as the Coquille watershed, it out competes and permanently displaces native vegetation. It is extremely aggressive and grows very quickly - up to a foot a week. Native animals and fish cannot use it for food or shelter. Therefore, knotweed destroys terrestrial and aquatic habitat that would otherwise be suitable for wildlife. The food chain could also be disrupted because knotweed takes nitrogen out of the soil without replacing it with leaf litter. Knotweed is most commonly found in the flood plains along rivers and streams. However, it will thrive in any moist soil or river cobble in full or partial light. It is important that you avoid cutting down the knotweed because it can regrow even stronger and small cuttings of the plant can re-sprout elsewhere if not contained.

If you have seen this plant on your property, please contact Coos
SWCD

541-396-6879

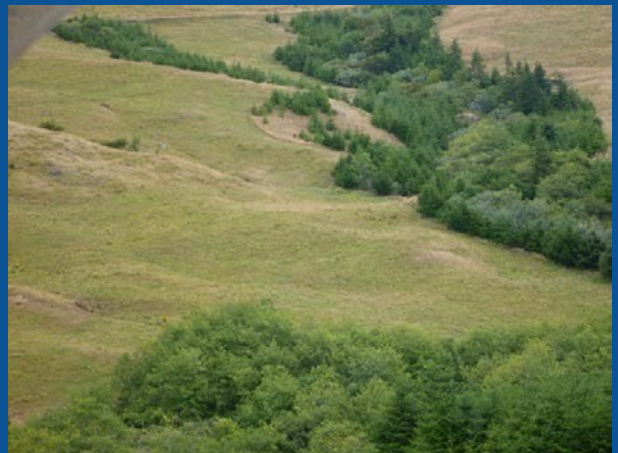
The Oregon Conservation Reserve Enhancement Program (CREP)

Participation in the Oregon Conservation Reserve Enhancement Program (CREP) remained strong in the past fiscal year. This unique State and Federal cooperative program provides cost-shares, incentive payments, and an annual rental payment to agricultural landowners who choose to restore and protect riparian buffers. This crucial work protects surface water quality in streams adjacent to pasture and crops, and contributes some of the most valuable wildlife habitat in our region.

The Coos/Curry CREP Technician serves landowners from the USDA Service Center in Coquille, helping to address resource concerns on agricultural land in both counties under a cooperative arrangement between Coos and Curry SWCDs. From July 2015 through June 2015, the local CREP program reported the following progress items:

- 58 outreach contacts
- 10 site visits
- 16 landowners provided with technical assistance
- 12 installation inspections on 105 acres
- 7 annual status reviews on active contracts.

Re-enrollments of contracts at the end of the 10- to 15-year obligation have been popular, with about two thirds of participants opting to continue cooperating. Those landowners who elect to allow their contracts to expire cite plans to sell the subject property, and a lack of willingness to continue maintenance in gorse-heavy areas. All intend to continue riparian protection on their own. One the landowner chose to re-enroll only a small piece of a large CREP contract, in preparation for an ambitious ground-disturbing channel re-meander for fish habitat.



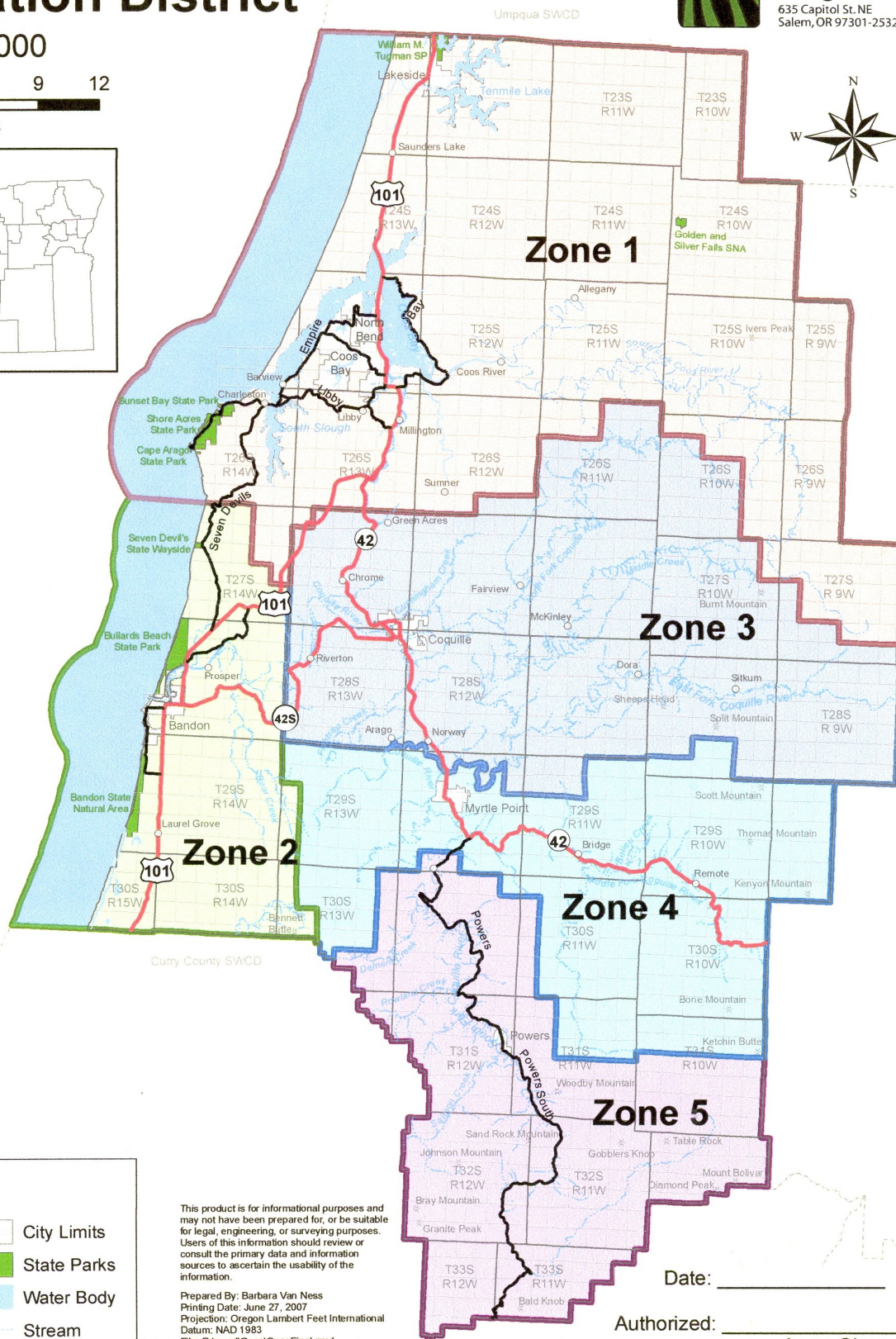
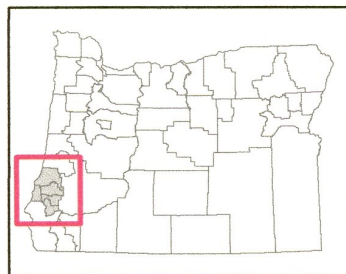
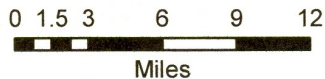
For information about the Oregon Conservation Reserve Enhancement Program, call Barbara Grant at the NRCS office in the USDA Service Center in Coquille: 541-396-2841 ext 106, or stop by the office at 382 North Central Blvd.

Coos Soil and Water Conservation District



Oregon
 Department of Agriculture
 635 Capitol St. NE
 Salem, OR 97301-2532

1:450,000



Legend

- City
- * Summit
- Major Road
- Major Hwy
- City Limits
- State Parks
- Water Body
- Stream

This product is for informational purposes and may not have been prepared for, or be suitable for legal, engineering, or surveying purposes. Users of this information should review or consult the primary data and information sources to ascertain the usability of the information.

Prepared By: Barbara Van Ness
 Printing Date: June 27, 2007
 Projection: Oregon Lambert Feet International
 Datum: NAD 1983
 File: D:\swcd\Coos\CoosFinal.mxd

Date: _____

Authorized: _____

Larry Ojua